

## Hydraulic Hand Pump Removal and Installation

### **WARNING:**

ALWAYS FOLLOW PROPER PPE & SAFETY PROCEDURES WHEN USING POWER EQUIPMENT

### **WARNING:**

DO NOT FILL WITH CYLINDERS EXTENDED

### **Before Removing Existing Pump**

Fig.1

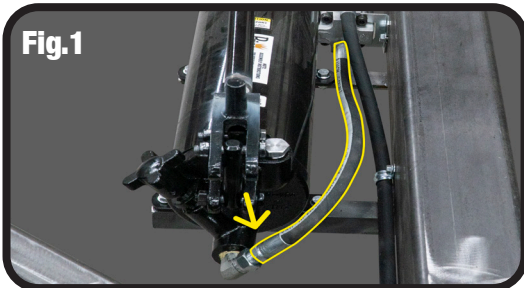


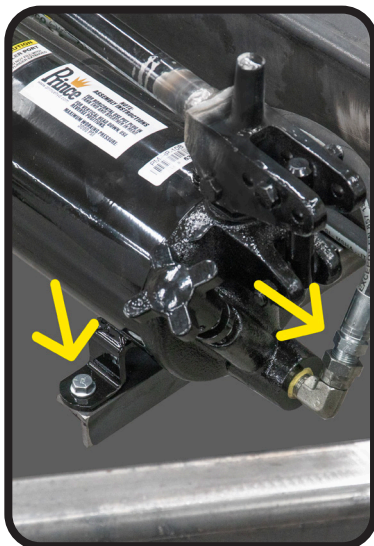
Fig.2



1. Release Pressure from Hydraulic System by turning the release valve counter-clockwise.
2. With slides lowered, disconnect the end of the hydraulic hose that is attached to the hand pump. Use caution when disconnecting hydraulic hose as fluid loss can occur. DO NOT remove the entire hose. (Figure 1)
3. With hose end disconnected, place a cap on end of hydraulic hose to prevent fluid loss and reduce the risk of air entering the hydraulic system (Figure 2)
4. Remove bolts that secure pump to the trailer

### Installing New Pump

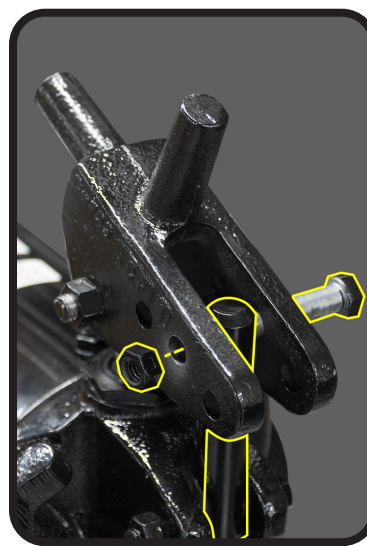
#### **1 Secure Pump**



Place new pump on brackets and secure with bolts and nuts.

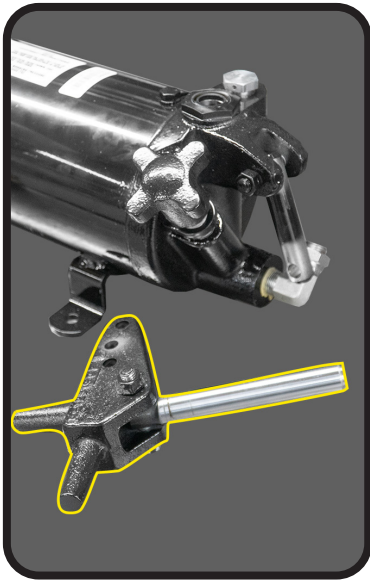
Reconnect hydraulic hose to the pump

#### **2 Removing Linkage Pin**



Remove the nut & bolt securing the yoke to the linkage pin. Linkage pin will drop once bolt is removed.

### 3 Remove Piston Rod



With yoke attached, pull piston assembly out of the piston cavity. Set it aside on a clean surface.

⚠ NOTICE ⚠

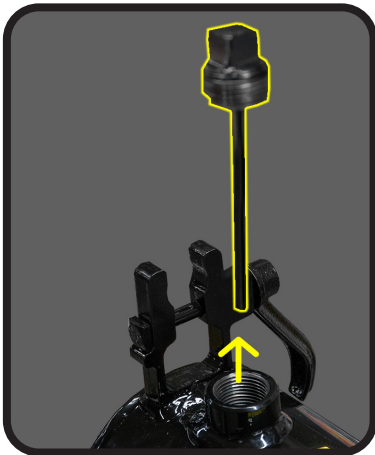
DO NOT SCRATCH / DAMAGE PISTON

### 4 Priming The Pump



With the piston assembly removed, fill the piston cavity with **automatic transmission fluid** as outlined in the service manual. Fill fluid to 1" from top. Reinstall piston & yoke. Reattach linkage pin to yoke with nut &

### 5 Open Filler Port

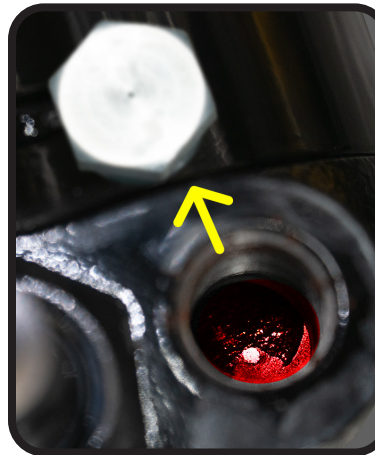


Take out the dip stick.

⚠ WARNING

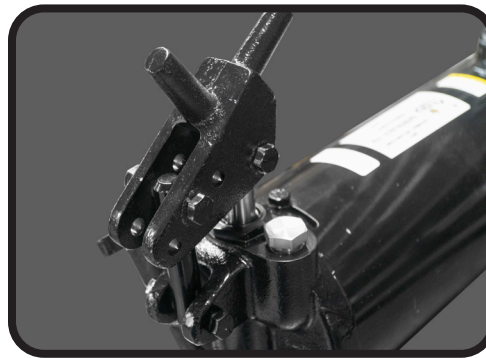
DO NOT FILL WITH CYLINDER EXTENDED.

### 6 Filling Pump Reservoir



Remove the vent plug. Fill the reservoir with fluid using the filler port. Once fluid is seen entering the vent cavity, pump is full.

### 7 Reinstall & Tighten the Dip Stick & Vent Plug



⚠ NOTICE ⚠

If fluid shoots out the breather/vent plug, the pump is overfilled. After several uses this goes away.